



CONSERVATION UPDATE



FLOURISH

Spring has officially sprung here in Conrad, MT! With sunny days and warmer weather, farmers are busy with spring fieldwork and anticipating the upcoming season ahead. Calves are being born, chicks are hatching, and lambs are frolicking in their pens. Spring brings so much excitement after the long winter. Spring is a time for flourishing! Check out the many upcoming events that can help you and your operation flourish this season. Enjoy a tasty spring treat that will lift up your senses in this new season. From all of us at PCCD, we wish you a lovely springtime!



Newsletter Content:

- *Flourish*
- *Upcoming Events*
- *What is a 310 Permit?*
- *Montana Envirothon*
- *Outdoor Classroom*
- *406 Grazing Academy*
- *Montana Range Tour*
- *Conservation Trees*
- *Sweet Spring Treat*

UPCOMING EVENTS:



- **April 9th**, PCCD Board Meeting 8 am at the USDA Office Conrad, MT
- **April 22nd-23rd**, Envirothon- Cascade Conservation District, Great Falls, MT
- **May 3rd**, PCCD Annual Outdoor Classroom held at the Dupuyer Creek Picnic Area
- **April 26th**, Conservation Trees delivered to the District
- **May 14th**, PCCD Board Meeting 8 am at the USDA Office Conrad, MT
- **June 11th-13th**, 406 Grazing Academy, Miles City, MT
- **June 20th**, Montana Range Tour, Stanford, MT

PCCD Board:

Paul Jones, Chair

Roger Paulsen, Urban Supervisor

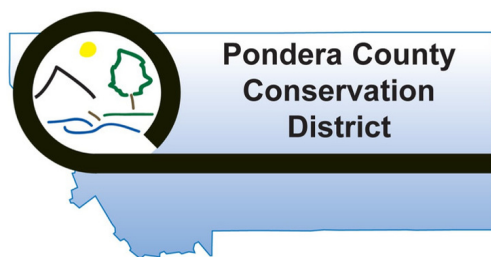
Kesler Martin, Supervisor

Ramsey Offerdal Jr., Supervisor

Eric Gunderson, Supervisor

Sarah Zielke, Urban Supervisor

Kaysie Steele, Administrator



WHAT IS A 310 PERMIT?



HISTORY:

In 1975, the Legislature enacted the National Streambed and Land Preservation Act, known as the 310 Law. This law is intended to protect and preserve streams and rivers and the lands adjacent to them.

WHEN DO I NEED TO ATTAIN A PERMIT?

A 310 permit is required **PRIOR** to beginning any project that physically alters or modifies the bed or banks of a perennial stream.

HOW DO I OBTAIN A PERMIT?

Visit us here at the Pondera County Conservation District. Located at
**406 N Main St
Conrad, MT 59425**
or email ponderacd@gmail.com





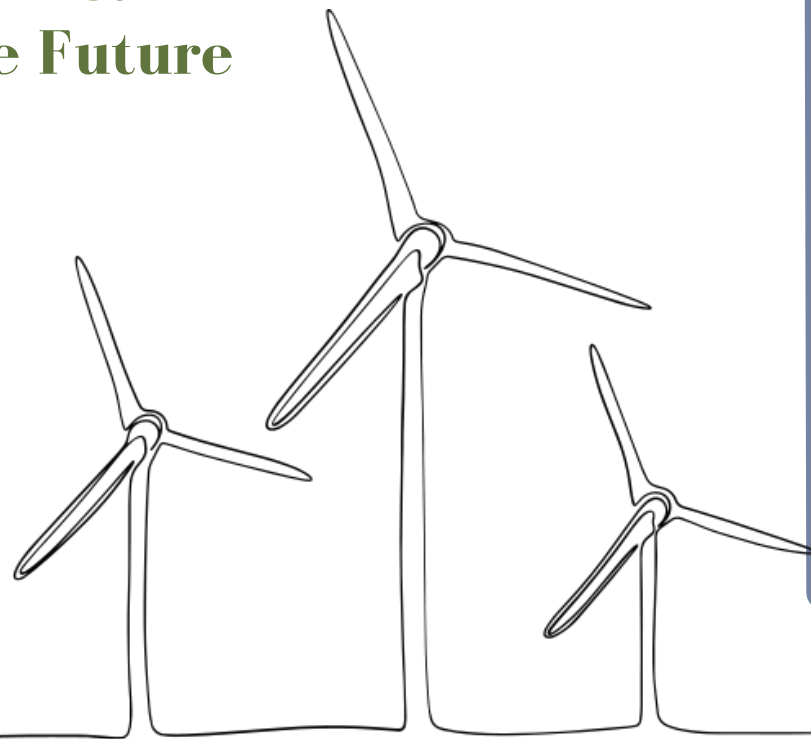
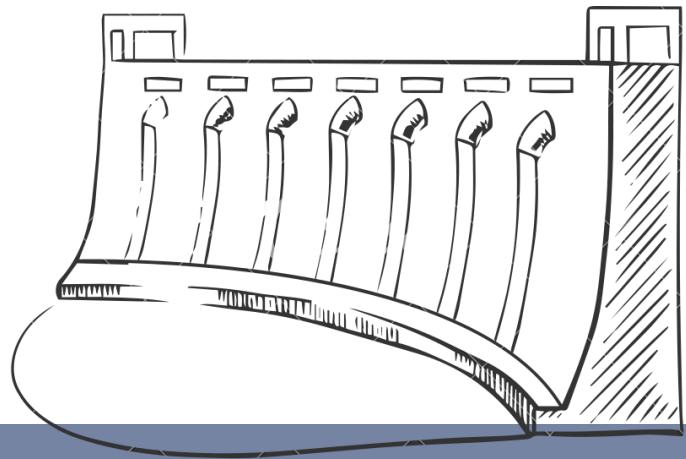
MONTANA ENVIROTHON



Envirothon is an event held annually by the Cascade Conservation District to challenge youth to a competition involving Range, Soils, Aquatics, Wildlife, and Forestry. The competition involves a written test along with a oral presentation to solve a current issue. Come see as dozens of high school students across Montana compete for 1st place!

THIS YEAR'S THEME:

Renewable Energy for a Sustainable Future



Our Annual Outdoor Classroom will be held on Friday, May 3rd, 2024 at the Dupuyer Creek Picnic Area from 9am- 2pm. We are excited to host event this year for our 4th graders in our community. We will have a range of booth presenters from a Rolling Rivers Trailer, to NRCS Soil education, FWP Bear Safety, FWP Fisheries education, and more! Stay tuned for our next issue that will highlight our event and the awesome time we had. See pictures below from last year's events.



406 Grazing Academy

A hands-on workshop for ranchers wanting to sharpen their grazing management skills



June 11 - 13, 2024

Miles City, Montana

Cost: \$200/person*

*Includes learning materials, range monitoring kit, 3 lunches, 2 dinners and snacks. Participants are responsible for their travel and lodging costs. **Class space is limited!!!**

Register here:

<https://svc.mt.gov/doa/opp/DNR406GrazingAcademyRegistration/cart>

Scholarship opportunities are available to assist with travel, lodging and course costs.

Visit reomontana.org for more details

Hotel Info:

Miles City Hotel & Suites
(406) 234-1000

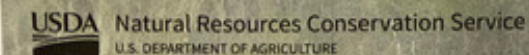
Miles City Hotel
(406) 234-1000

Use code 406 Grazing Academy to receive the discounted group rate

Registration & hotel block close 4/26/2024



Register here



Montana Range Tour

An educational field day for ranchers desiring to learn from others who are leaders in implementing innovative on-the-ground grazing and agricultural practices.

June 20, 2024

Stanford, Montana

Cost: \$65/person*

*Includes Leopold Conservation Award breakfast, sack lunch, transportation to tour sites & educational speakers. Participants are responsible for lodging and personal travel costs.

Register here:

<https://svc.mt.gov/doa/opp/MTRangeTour/cart>

Lodging can be reserved in Lewistown, MT at:

Calvert Hotel (406) 535-5411 Judith Mtn Lodge (406) 538-7063

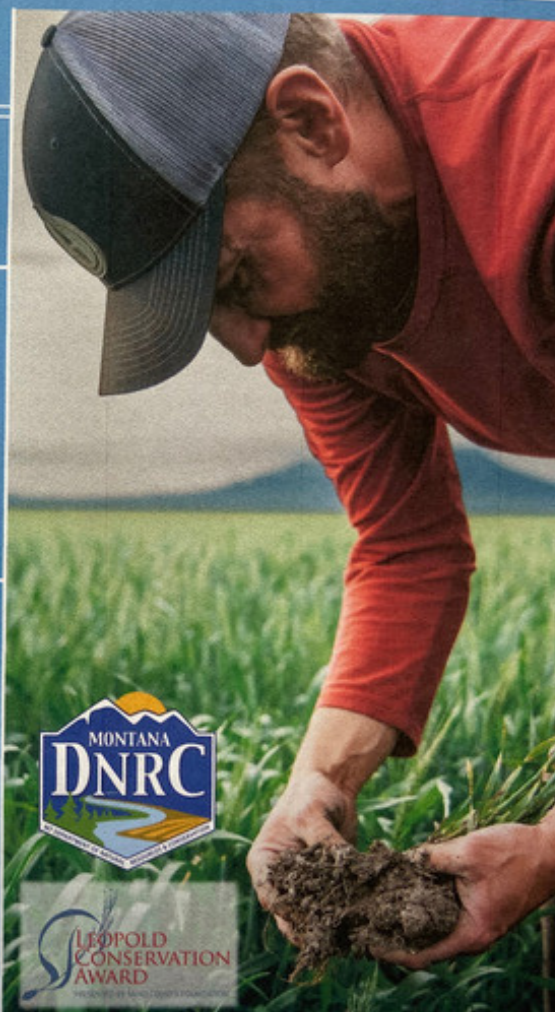
Super 8 (406) 708-4541 Yogo Inn (406) 535-8721

B&B Motel (406) 708-5496

Registration closes 5/27



Register here



Canva

Canva

Canva

Canva

Canva

Canva

Canva

SALE

Items for Sale:

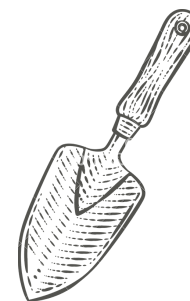
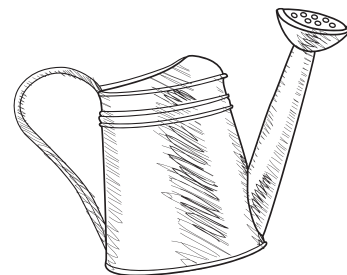
- Trees for Conservation- Orders completed before Oct. 1st
- Landscape Fabric- \$125/roll (6' x 500' roll)
- Montana Women History Book- \$22
- Marker Flags- \$12/bundle (100 per bundle)
- Map Ordinance Book- \$35
- Bird Ramps- \$40



Conservation Trees:

For those that have ordered trees, we expect the trees to arrive on April 26th in the late morning. Please bring a check for your payment at the time of tree pickup. Our Administrator will be contacting you prior to pick up to inform you on the amount you owe and to remind you of the time to come by the office. The pick up location of your conservation trees and landscape fabric will be:

**406 N Main Street
Conrad, MT 59425**



Equipment for Rent

- Level \$25/day
- Doppler Flow Meter \$250
- MCCS Measuring Probe \$10/day
- Towner Disc \$10/acre first time over, then \$6/acre. \$250 deposit
- Tree Spade \$20/tree, \$250 deposit
- Scraper
- Fabric layer \$20/roll, fabric purchased @ PCCD covers cost for rent. \$250 deposit
- Tree planter \$0.15/tree, \$50/day minimum if 1-333 trees. \$250 deposit

Deposits are refundable upon payment of any required repair charge

See Rental Agreement form for more details



Strawberry Shortcake

A DOLLOP OF WHIPPED CREAM & FRESH BERRIES

INGREDIENTS:

- 3 c. all-purpose flour
- 1 c. granulated sugar, divided
- 4 tsp. baking powder
- 1 tsp. Salt
- 1 1/2 sticks of cold unsalted butter, cubed (3/4 cup)
- 4 3/4 c. whipping cream, divided
- 1 large egg
- 1 tbsp. vanilla extract
- 1 orange, zested then halved
- 1 tbsp. coarse sugar (like sugar in the raw)
- 1 qt. strawberries, hulled and sliced

DIRECTIONS:

1. Stir together the flour, 1/2 cup of the granulated sugar, baking powder, salt, and butter with a fork in a large bowl until the butter is coated with flour. Using the tines of the fork or your fingers, break the butter cubes into pea-sized pieces, tossing them to coat with the flour mixture until crumbly. Set aside.
2. Preheat the oven to 425° with the oven racks positioned in the upper and lower thirds of the oven. Whisk together 1 3/4 cups of the whipping cream with the egg, vanilla, and the orange zest in a medium bowl until combined. Gradually add the cream mixture to the flour mixture, stirring until the dough just comes together and there are no pockets of dry flour left.
3. Using a 1/3 cup measure or cookie scoop, drop leveled scoops of the shortcake dough onto parchment-lined rimmed baking sheets, spacing the dough mounds at least 2 inches apart. Press the dough rounds to flatten slightly and sprinkle the tops with coarse sugar. Bake until the tops are golden brown, about 15 minutes, rotating the pans between the upper and lower racks halfway through baking.
4. While the shortcakes bake, stir together the strawberries, 1/4 cup of remaining granulated sugar, and juice from the orange halves in a bowl. Use a hand mixer to beat the remaining 3 cups cream and the remaining 1/4 cup granulated sugar in another medium bowl until soft, fluffy peaks form, about 2 minutes.
5. Remove the biscuits from the oven; let cool 5 minutes. Use a fork to gently split each biscuit in half. For each serving, add a dollop of whipped cream to each biscuit bottom, followed by a spoonful of strawberries. Top with a biscuit half, more whipped cream, and more berries. Serve immediately.



PCCD holds monthly board meetings on the second Tuesday of each month at 8 a.m. Please call 406-278-7611 ext. 1048 if you would like more information.