

CONSERVATION UPDATE



SOAK IN SUMMER

The days of summer are settling in here in Pondera County! Summertime activities are taking full swing, from rodeos to barbeques, families are actively taking in all they can in these warm summer months. Check out some features in this edition of Conservation Update: from upcoming events, to refreshing Blended Peach Sunrise smoothie! This edition will surely bring some refreshment to your summer reading.



Newsletter Content:

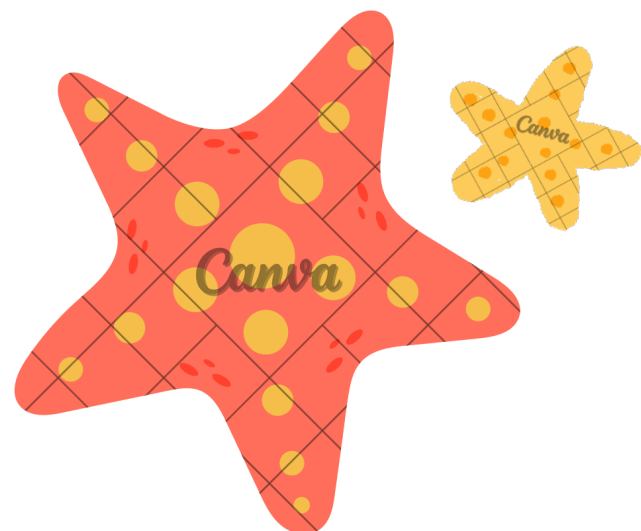
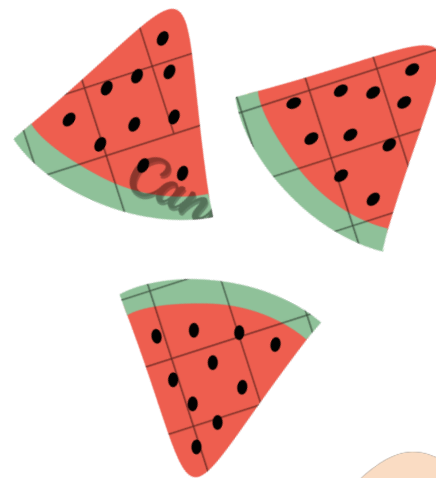
- *Soak in Summer*
- *Upcoming Events*
- *What is a 310 Permit?*
- *NRCS Corner*
- *Little Seed Library*
- *Conservation Trees*
- *Blended Peach Sunrise Recipe*

UPCOMING EVENTS:



- **July 8th PCCD Board Meeting**, 8am at the USDA Office in Conrad
- **August 12th PCCD Board Meeting**, 8am at the USDA Office in Conrad
- **August 12th Permissive Levy Hearing**, 8am at the USDA Office in Conrad

HELLO
Summer



WHAT IS A 310 PERMIT?



HISTORY:

In 1975, the Legislature enacted the National Streambed and Land Preservation Act, known as the 310 Law. This law is intended to protect and preserve streams and rivers and the lands adjacent to them.

WHEN DO I NEED TO ATTAIN A PERMIT?

A 310 permit is required **PRIOR** to beginning any project that physically alters or modifies the bed or banks of a perennial stream.

HOW DO I OBTAIN A PERMIT?

Visit us here at the Pondera County Conservation District. Located at
406 N Main St
Conrad, MT 59425
or email ponderacd@gmail.com



What's going on at your local NRCS office?

Currently, the only funding available to the county is through the CSP contracts. Farm Bill Biologist, Ali Marschner shared that next year looks more promising for funding available for producers in our county. Koltin Christiaens, District Conservationist, shared that prioritizing natural resource concerns in our county will be key to helping get funds available to producers that have projects with those concerns. Unfortunately, the NRCS staff was able to hire a summer intern, but that fell through after a short time.



Check this out!



[click here to learn more!](#)

An exciting new resource is available to our community. MSU Extension and Conrad Public Library have partnered together to open a seed library at the Conrad Public Library. Since the first seed library opened in the US twenty years ago, seed libraries have been springing up across the nation and around the globe to preserve heirloom seeds adapted to particular regions.

Seed libraries are a fun, grassroots effort of gardeners interested in growing produce and harvesting seeds to preserve and share with their neighbors. The concept is simple: seed libraries provide open-pollinated and heirloom seeds to the public. People select seeds to take home, grow, and enjoy the produce. The hope is that some seed library patrons will choose to become more involved, go the extra mile, and save seeds from a few plants to return to the seed library in the fall. The returned seeds will then be packaged by volunteers and checked out to other gardeners the following growing season. All you need is a library card to get started, come pick yours up today!



SALE

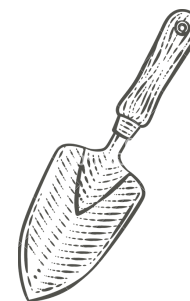
Items for Sale:

- Trees for Conservation- Inquire with the District
- Landscape Fabric- \$125/roll (6' x 500' roll)
- Montana Women History Book- \$22
- Marker Flags- \$12/bundle (100 per bundle)
- Map Ordinance Book- \$35
- Bird Ramps- \$40



Conservation Trees:

If you are interested in ordering trees for the upcoming spring, please stop into the USDA office to pick up an ordering form this fall. Please complete the form and turn it back into the office in a timely manner. The seedling sale at the state nursery in Missoula will begin in January and goes through April 1st. The District Administrator will order trees when the sale first begins to ensure best chance for getting producers their desired species.



Equipment for Rent

- Level \$25/day
- Towner Disc \$10/acre first time over, then \$6/acre. \$250 deposit
- Tree Spade \$20/tree, \$250 deposit
- Scraper
- Fabric layer \$20/roll, fabric purchased @ PCCD covers cost for rent. \$250 deposit
- Tree planter \$0.15/tree, \$50/day minimum if 1-333 trees. \$250 deposit

Deposits are refundable upon payment of any required repair charge

See Rental Agreement form for more details



Blended Peach Sunrise

INGREDIENTS:

Peach Sunrise

- *One 16-ounce bag frozen peaches*
- *2 cups peach nectar*
- *1 to 2 cups orange juice*
- *1 tablespoon lemon juice*
- *1 cup sparkling grape juice*

Garnish

- *1 lemon slice*
- *1/4 cup lemon sugar (1/4 cup sugar plus 1 tablespoon lemon zest)*
- *Fresh berries, for serving*
- *Peach wedges, optional*

DIRECTIONS:

1. *To make the peach sunrise: Combine the peaches, peach nectar, orange juice, and lemon juice in a blender and blend until smooth. Add up to 2 cups orange juice if you would like a thinner consistency.*
2. *Pour into a pitcher and top with the sparkling grape juice.*
3. *For the garnish: Rim the glasses with the lemon slice and dip in the lemon sugar.*
4. *Add a few berries to each glass and pour in the blended peach mixture. Add a wedge of peach to the rim of each glass, if desired.*



PCCD holds monthly board meetings on the second Tuesday of each month at 8 a.m. Please call 406-278-7611 ext. 1048 if you would like more information.

PCCD Board:

Paul Jones, Chair
Roger Paulsen, Urban Supervisor
Kesler Martin, Supervisor
Ramsey Offerdal Jr., Supervisor
Eric Gunderson, Supervisor
Sarah Zielke, Urban Supervisor
Kaysie Steele, Administrator

